

# SECTION P

TACET

RADIO 1/BICYCLE BELL

TACET

RADIO 2/PEEWIT

IMPROVISE FREELY ON WOODEN WHISTLE

WOODEN & PARTY WHISTLE

20 secs

GUN

25 secs

SWANEE WHISTLE

30 secs

SAX-A BOOM/HORN

30 secs

SPARSE GENTLE RINGING ON BELL

BELL1/CRAWMILL

IMPROVISE FREELY ON RUFF'N'TUFF

RUFF'N'TUFF

SPARSE GENTLE RINGING ON BELL

BELL 2/HORN

TACET

DRUMS

30 secs

FREE CHOICE OF PITCH

*pppp*

FREE CHOICE OF PITCH

*pppp*

30 secs

FREE CHOICE OF PITCH

*pppp*

30 secs

*pppp*

# SECTION R

 = 70

60 secs IMPROVISED SOLO WITH DRUMS 6/8 SWING

RADIO 1/BICYCLE BELL	
	TACET
RADIO 2/PEEWIT	
	TACET
WOODEN & PARTY WHISTLE	
	TACET
GUN	
	TACET
SWANEE WHISTLE	
	TACET
SAX-A BOOM/HORN	
	TACET
BELL1/CRAWMILL	
	TACET
RUFF'N'TUFF	
	TACET
BELL 2/HORN	
DRUMS	

60 secs ENERGETIC 6/8 SWING FEEL. DUET WITH SOLOIST

# SECTION 0

♩ = 110

DELICATELY

BRASS INSTRUMENTS USE MUTES.  
SAXES PLAY WOODWINDS IF POSSIBLE. BASS USE BOW FOR LONG NOTES.  
PLAY PITCHES INDICATED BUT FOLLOW INSTRUCTIONS AS TO REGISTER

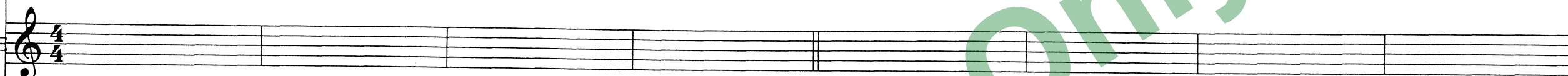
RADIO 1/BICYCLE BELL



RADIO 2/PEEWIT



WOODEN & PARTY WHISTLE



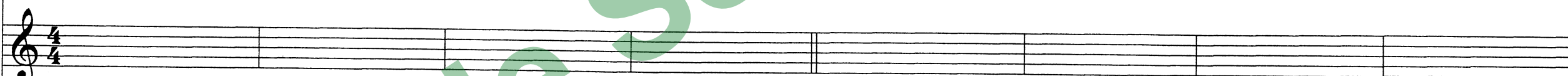
GUN



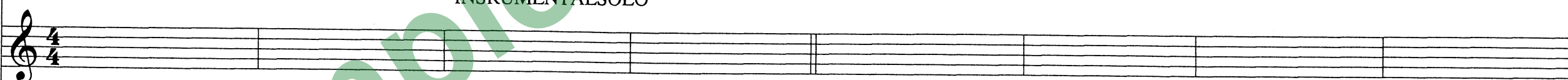
SWANEE WHISTLE



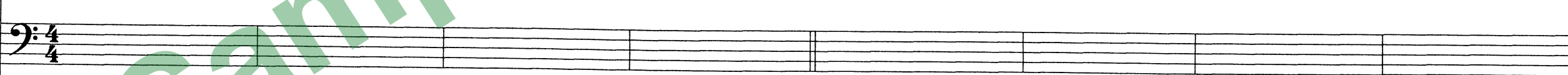
SAX-A-BOOM/HORN



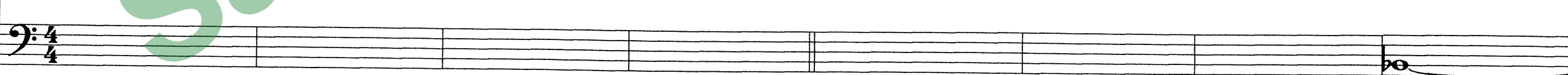
BELL 1/CRAWMILL



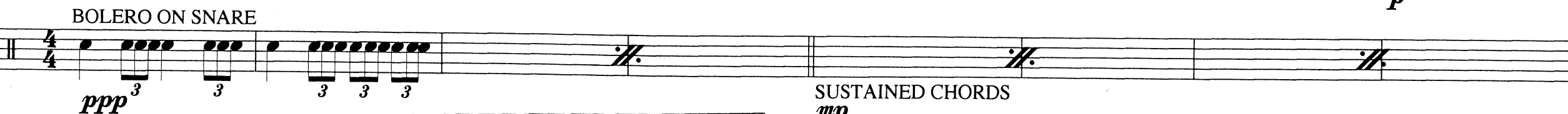
RUFF'N'TUFF



BELL 2/HORN



DRUMS



SUSTAINED CHORDS  
*mp*