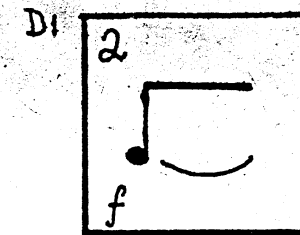


# Games

Anne Boyd.



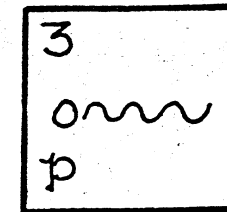
"Games" may be played by any number of players, or groups of players, together with one or more conductors.

"Games" may be interpreted aurally and/or physically.

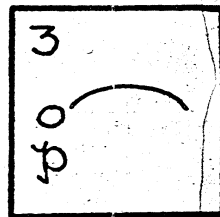
The players may individually or collectively interpret each of the four boxes used in "Games". The interpretation should remain consistent for any one performance.

The numbers used in the boxes and squares indicate the number of signals given by the conductor. The duration of each signal is determined by the conductor. After completing a box

C<sub>1</sub>



B<sub>1</sub>



Sample Score Only