

Handwritten musical score for piano, page 3. The score is on a grand staff with treble and bass clefs. It features a tempo marking of quarter note = 72, a 4/4 time signature, and dynamics including piano (p), poco, and piano-pieno (pp). The piece includes complex fingering with many five-finger spans, a fermata, and a 'con ped.' instruction. A large green watermark 'Sample Score Only' is overlaid diagonally across the page.

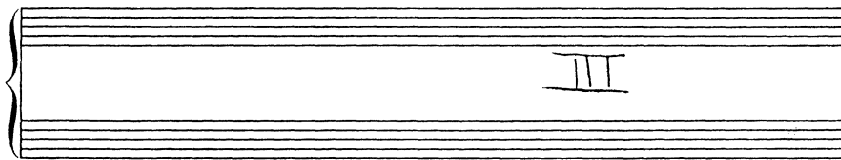
4

II

$\text{♩} = c. 96$

Handwritten musical score for piano. The score is written on a grand staff with treble and bass clefs. The time signature is 3/4. The key signature has one sharp (F#). The tempo is marked as $\text{♩} = c. 96$. The score begins with a *mp* dynamic marking. The first section consists of a melodic line in the right hand and a bass line in the left hand. The second section is marked *cresc.* and features a more complex rhythmic pattern. The third section is marked *mf* and consists of a dense, rhythmic accompaniment in the left hand. The score is numbered 2 in the bottom left corner.

Sample Score Only



fairly free tempo, very slow

X

Handwritten musical notation for piano. It features two staves. The upper staff is in treble clef with a key signature of one flat (B-flat). It contains several notes with accidentals: a B-flat, a B-natural, and a B-flat. The lower staff is in bass clef with a key signature of one flat (B-flat) and contains a B-flat note. Above the upper staff, there are handwritten notes: '#b' above a B-flat note, 'b' above a B-natural note, and '#b' above a B-flat note. There are also some vertical lines and parentheses around these notes. The word 'piano' is written in the lower left of the upper staff.

tre corde sempre.

Sample Score Only

IV

Time sigs
Fast, but distinctly

F con bravura

con pedale

(9)

Sample Score Only

V

$\text{♩} = c 58$

tr
#0 (F#)
mf
(accompanying melody line)
5
3
9

Sample Score Only