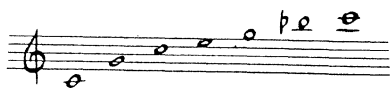


SUN

BRIGHT - LOUD

TRUMPET 1:

Improvise a bright solo on the natural harmonic series:

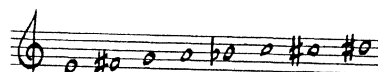


CLOUDS

mp - SLOWLY MOVING

HORN 1 (CON SORD):

Improvise a slow undulating melody based on this scale:

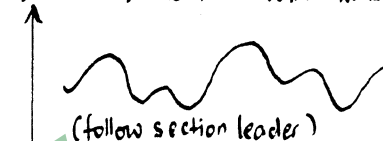


RAIN

WIND

UP + DOWN / CONTINUOUS

pp BLOW/WHISTLE THROUGH INSTRUMENT



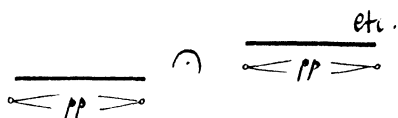
(follow section leader)

CHROMATIC SCALES
FLUTTERTONGUE IF POSS.

FOG

pp - CON SORD.

long low notes, separated by pauses: each player in own time. Beginnings and endings of notes inaudible.



"WEATHER REPORT"

[IDEAS FOR IMPROVISATION]

BRASS

THUNDER AND LIGHTNING

LIGHTNING: **fff** HIGH → LOW

short rapid flourish from top to bottom of instrument



as cued by conductor

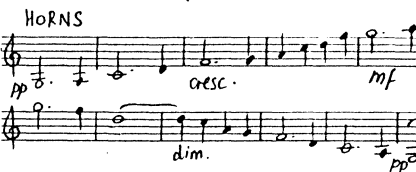
FROST

SNOW

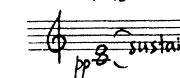
HAIL

RAINBOW

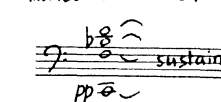
as cued by conductor:



TRUMPETS

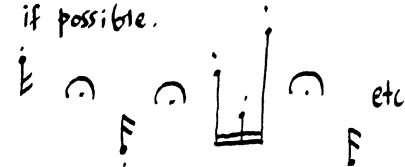


TROMBONES AND TUBA



f - STACC - IRREGULAR

single notes, or groups of 2 or 3, separated by pauses. Vary pitch and use all 12 semitones. Mutes if possible.



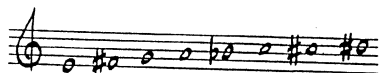
CLOUDS

BRASS

Mp - SLOWLY MOVING

HORN 1 (CON SORD):

Improvise a slow undulating
melody based on this scale:

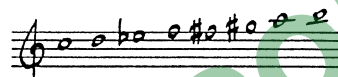


WIND

pp - SLOWLY MOVING

flutes and oboes only:

PLAY EVEN 8s at c. 120 MM
UNDULATING STEPWISE MOTION
USE THIS SCALE:



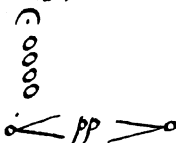
PERCUSSION

PIANO & HARP

STRINGS

pp - SLOWLY MOVING

PLAY LONG HIGH CHORDS
PITCHES AD LIB:



each section independent
as cued by conductor

AUDIENCE