

Section: Night Sweat

M. 48 butt of trade snare drum strokes & chorale mallet

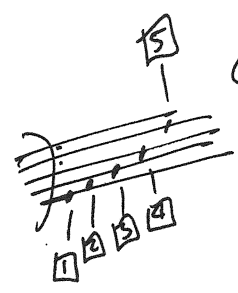
☉ = one-hand m.b (which slows slightly) becoming m.b roll proper.

♯ = single stick roll  
 ♯ = multi-beam roll  
 ⊕ = damper

⊖ = muffled with marmite chorale mallet - always pp, & a dull 'tweed' (like a heart-beat)  
 ♯ = 1/4 note sharp; ♭ = 1/4 note flat; ## = 3/4 sharp; ♭♭ = slightly out of tune

⊖ - gliss - all notes struck as gliss executed  
 ⊖ - bracketed stem not struck

(1/2/11)



Handwritten musical notation for the first system, measures 1-5. It includes notes, rests, and dynamic markings such as pp, mf, and f. There are also performance instructions like 'even' and 'mf 7'. A circled '20' is written above the staff.

Handwritten musical notation for the second system, measures 6-10. It includes notes, rests, and dynamic markings such as f, pp, and mf. There are also performance instructions like 'RH: mf' and 'LH: mp-mf (just softer than RH) - & even poss.'. A circled '20' is written above the staff.

Handwritten musical notation for the third system, measures 11-15. It includes notes, rests, and dynamic markings such as pp, mf, and pp. There are also performance instructions like '(as if continuing)'. A circled '20' is written above the staff.

☉ rest can be slightly larger to get feet to pedals if need be.

☉ - roll can be sustained slightly if resp.  
 ♯ = 'harmonic' sound (touch?; play rear edge?) - use chorale mallet.