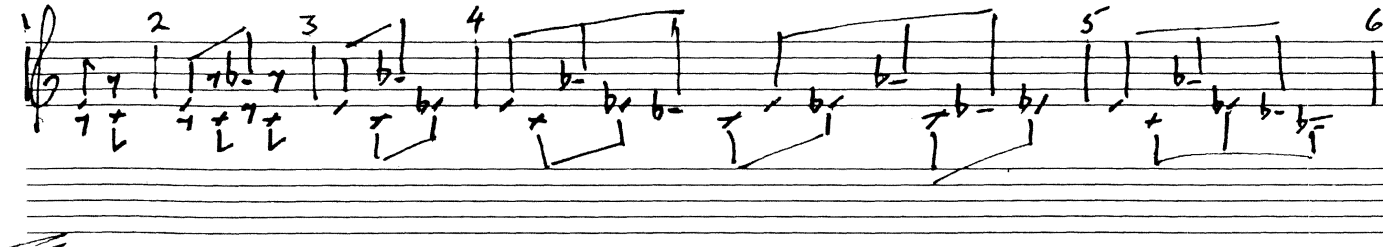


IGOR AND THE WOLF - for harpsichord.

- \* Harpsichord tuned in "mean-tone" with E-G<sup>#</sup> perfect & the "wolf" 5<sup>th</sup> A<sup>b</sup>-E<sup>b</sup>
- \*  $\begin{matrix} \square & \square \\ \text{RH} & \text{LH} \end{matrix}$  - preferably on 2 different manuals
- \* Each bar (except the last) repeated as often as desired before moving without break to the next.
- \* Tempo (fairly fast) & phrasing left to performer's discretion.

\* Accidentals refer only to adjacent notes.



Sample Score Only