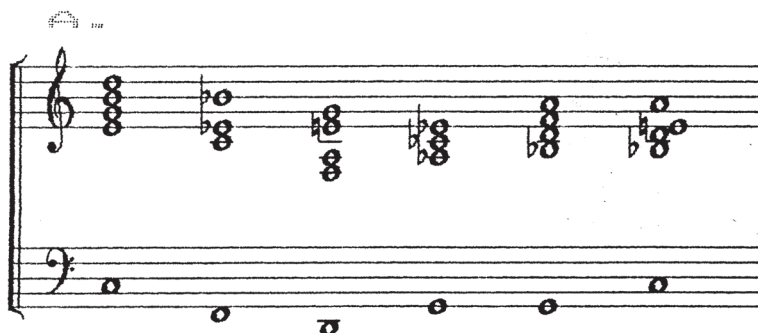


In unmetred sections A C E G I K M always play soft slow chords, always use pedal. Freely permute the chords in the section for ca. 1 minute, always begin the section with chord 1 of the section and finish the section with the sixth chord. The metered sections B D F H J L are played once only each - pp - in the indicated slow tempo with the pulse hearable. In section M, begin with chord 1, freely permute chords for 1 minute, then close with the chords in order.

Ghent, Belgium May 1989 -WB



Sample Score Only